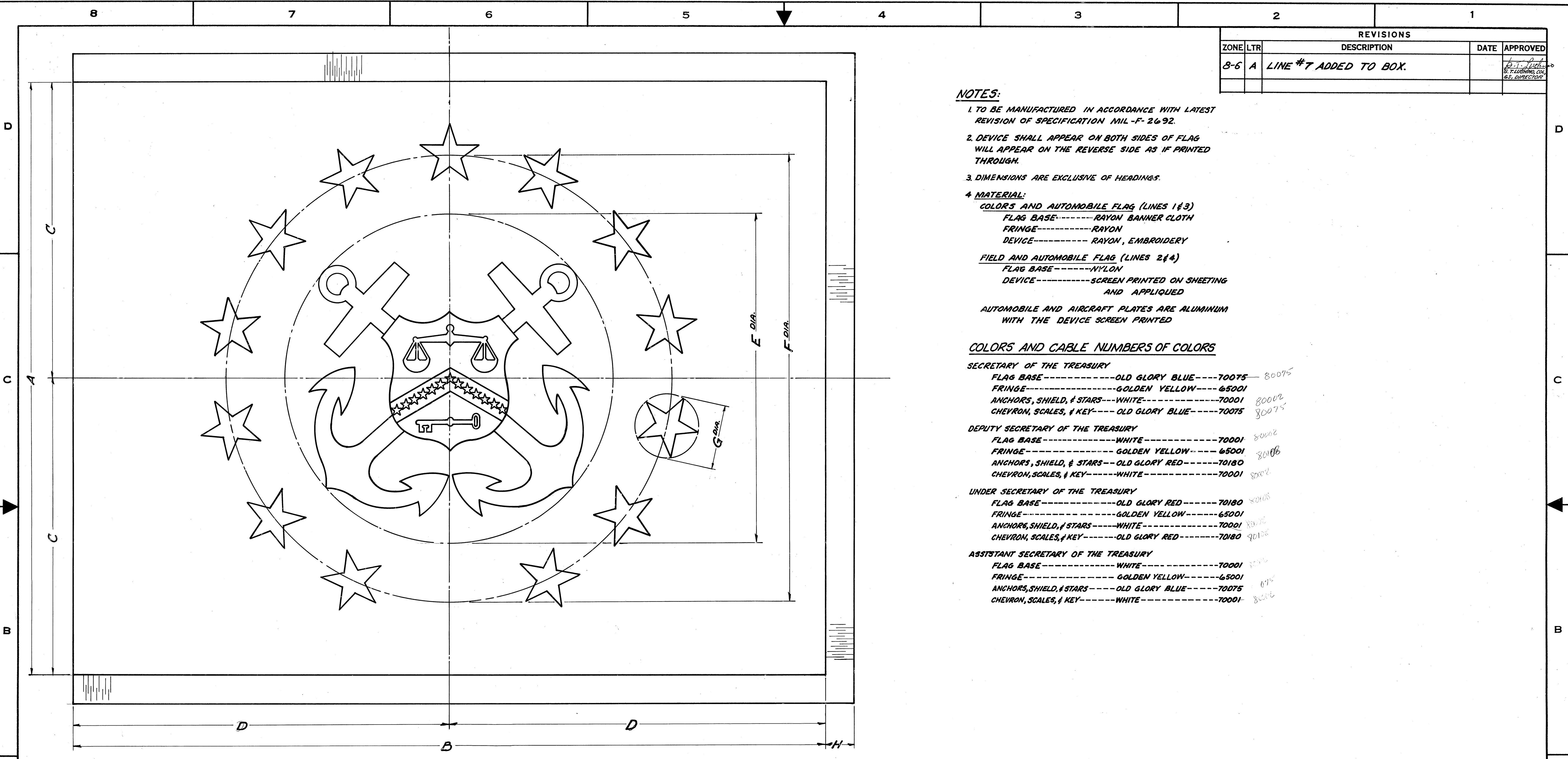


REVISIONS				
ZONE	LTR	DESCRIPTION	DATE	APPROVED
8-6	A	LINE #7 ADDED TO BOX.		<i>[Signature]</i> S. T. LEBLANC, COL 63, DIRECTOR



NOTES:

1. TO BE MANUFACTURED IN ACCORDANCE WITH LATEST REVISION OF SPECIFICATION MIL-F-2692.
2. DEVICE SHALL APPEAR ON BOTH SIDES OF FLAG WILL APPEAR ON THE REVERSE SIDE AS IF PRINTED THROUGH.
3. DIMENSIONS ARE EXCLUSIVE OF HEADINGS.
4. MATERIAL:
 COLORS AND AUTOMOBILE FLAG (LINES 1 & 3)
 FLAG BASE-----RAYON BANNER CLOTH
 FRINGE-----RAYON
 DEVICE-----RAYON, EMBROIDERY
 FIELD AND AUTOMOBILE FLAG (LINES 2 & 4)
 FLAG BASE-----NYLON
 DEVICE-----SCREEN PRINTED ON SHEETING AND APPLIED
 AUTOMOBILE AND AIRCRAFT PLATES ARE ALUMINUM WITH THE DEVICE SCREEN PRINTED

COLORS AND CABLE NUMBERS OF COLORS

- SECRETARY OF THE TREASURY**
 FLAG BASE-----OLD GLORY BLUE-----70075 80075
 FRINGE-----GOLDEN YELLOW-----65001
 ANCHORS, SHIELD, & STARS-----WHITE-----70001 80002
 CHEVRON, SCALES, & KEY-----OLD GLORY BLUE-----70075 80075
- DEPUTY SECRETARY OF THE TREASURY**
 FLAG BASE-----WHITE-----70001 80001
 FRINGE-----GOLDEN YELLOW-----65001 80006
 ANCHORS, SHIELD, & STARS-----OLD GLORY RED-----70180
 CHEVRON, SCALES, & KEY-----WHITE-----70001 80002
- UNDER SECRETARY OF THE TREASURY**
 FLAG BASE-----OLD GLORY RED-----70180 80008
 FRINGE-----GOLDEN YELLOW-----65001
 ANCHORS, SHIELD, & STARS-----WHITE-----70001 80002
 CHEVRON, SCALES, & KEY-----OLD GLORY RED-----70180 80008
- ASSISTANT SECRETARY OF THE TREASURY**
 FLAG BASE-----WHITE-----70001 80001
 FRINGE-----GOLDEN YELLOW-----65001 80006
 ANCHORS, SHIELD, & STARS-----OLD GLORY BLUE-----70075 80075
 CHEVRON, SCALES, & KEY-----WHITE-----70001 80001

N ^o OF LINE	KIND	DIMENSIONS								HEADING
		A	B	C	D	E DIA.	F DIA.	G DIA.	H	
1	COLOR	4'-4"	5'-6"	2'-2"	2'-9"	2'-4 ³ / ₈ "	3'-3 ¹ / ₂ "	5 ⁵ / ₈ "	2 ¹ / ₂ "	5-1-45E
2	FIELD FLAG	3'-0"	4'-0"	18"	2'-0"	19 ¹⁵ / ₁₆ "	2'-3 ³ / ₁₆ "	3 ⁷ / ₈ "		5-1-45D
3	AUTO FLAG (RAYON)	18"	2'-2"	9"	13"	10"	13 ⁵ / ₈ "	1 ¹⁵ / ₁₆ "	1 ¹ / ₂ "	5-1-45F
4	AUTO FLAG (NYLON)	18"	2'-2"	9"	13"	10"	13 ⁵ / ₈ "	1 ¹⁵ / ₁₆ "		5-1-45F
5	AUTO PLATE	6"	9"	3"	4 ¹ / ₂ "	3 ⁵ / ₈ "	4 ³ / ₁₆ "	1 ¹ / ₁₆ "		
6	AIRCRAFT PLATE	11"	14"	5 ¹ / ₂ "	7"	6 ³ / ₈ "	8 ³ / ₄ "	1 ³ / ₁₆ "		
7	SPECIAL (NAVY)	4'-0"	6'-0"	2'-0"	3'-0"	2'-3 ¹ / ₈ "	3'-0 ³ / ₄ "	5'-0"		5-1-45B

SUPERSEDES BUSHIPS DWG. No 16696, SHEET 66C, DATED 17 MAY 1955.
 SUPERSEDES TIOH DWG. No 57-9 DTD 28 MAY 1958

UNLESS OTHERWISE SPECIFIED DIMENSIONS ARE IN INCHES TOLERANCES ON FRACTIONS DECIMALS ANGLES	THE INSTITUTE OF HERALDRY, U. S. ARMY CAMERON STATION ALEXANDRIA, VA. 22314	
	FLAGS AND PLATES	
	SECRETARY, DEPUTY SECRETARY	
	UNDER SECRETARY, & ASSISTANT SECRETARY OF THE TREASURY	
MATERIAL:	EXAMINED <i>CM</i>	DATE <i>2/14</i>
	CHECKED	DATE <i>2/18</i>
	PREPARED	
	APPROVED	
	<i>Charles R. Spittler</i> CHARLES R. SPITTLER, COLONEL, AGC, COMMANDING	
SIZE	CODE IDENT. NO.	
D	22571	5-1-494
SCALE 1/4		DATE 29 NOVEMBER 1972